



# SURFEDGE

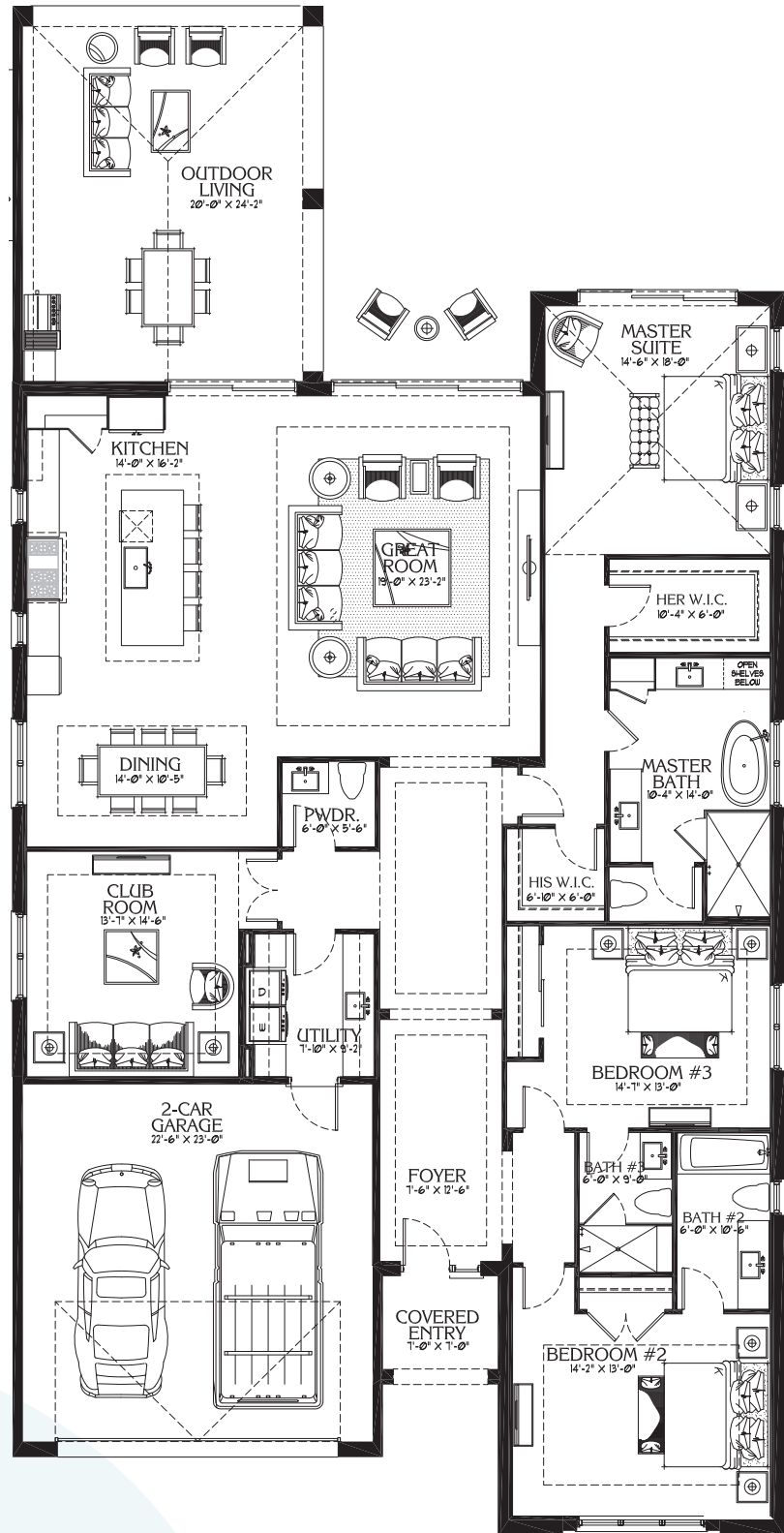
AT INDIAN RIVER SHORES

## SANDBAR FLOOR PLAN SINGLE-FAMILY HOMES

3 BEDS  
3.5 BATHS  
+ BONUS ROOM

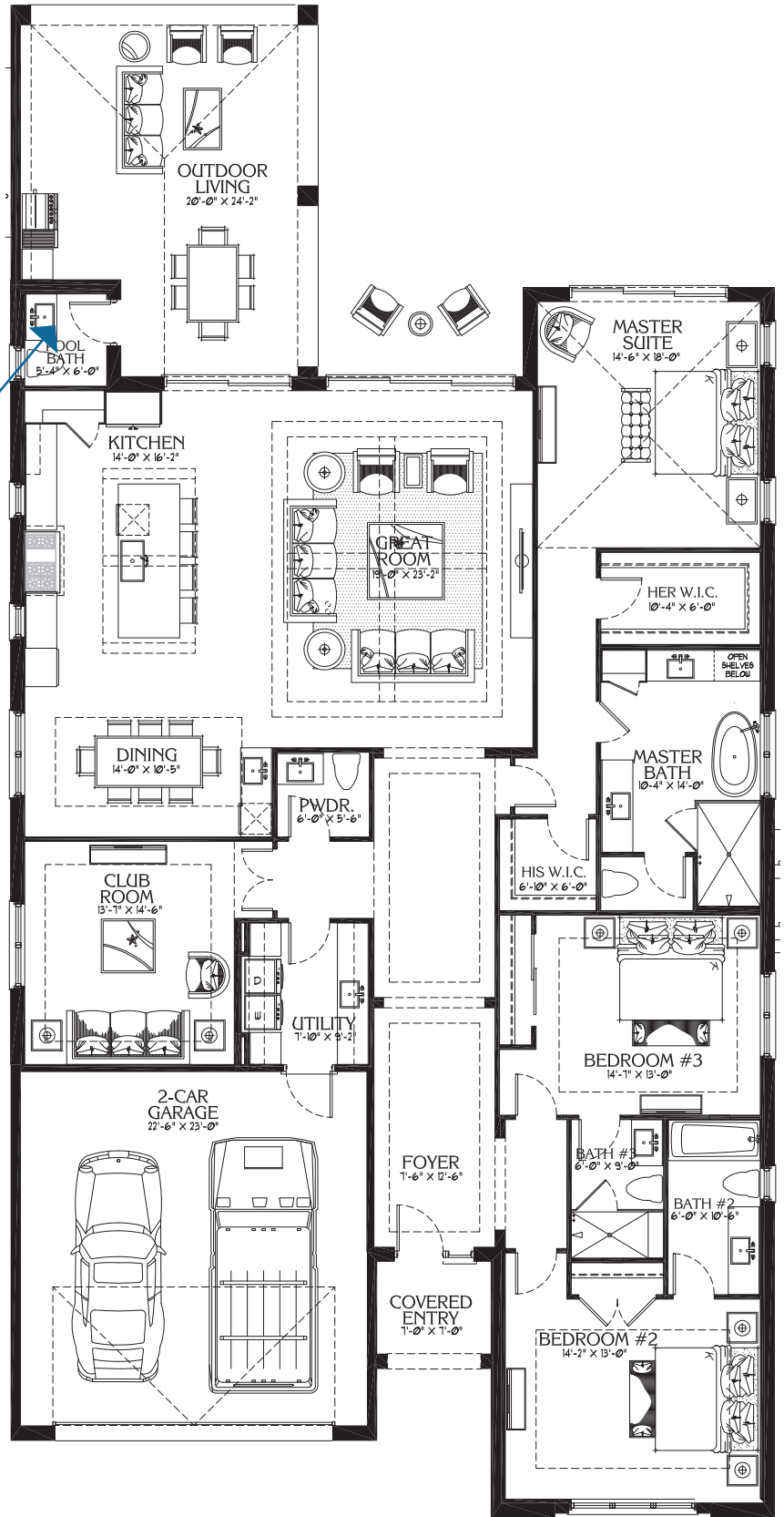
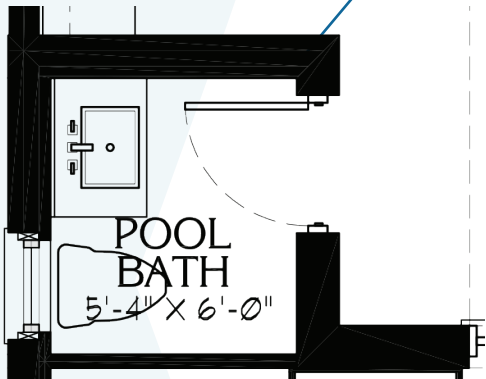
LIVING AREA: 3,017 SQUARE FEET  
TWO-CAR GARAGE: 563 SQUARE FEET  
OUTDOOR LIVING -  
COVERED TERRACE - ENTRY: 490 SQUARE FEET

TOTAL AREA: 4,070 SQUARE FEET



# SANDBAR OPTION

OPTIONAL POOL BATH: 46 SQUARE FEET



DALE SORENSEN  
REAL ESTATE INC.  
THE RIGHT MOVE™

772.200.4779

SurfsedgeIndianRiverShores.com



THE LUTGERT COMPANIES

ORAL REPRESENTATIONS CANNOT BE RELIED UPON AS CORRECTLY STATING REPRESENTATIONS OF THE DEVELOPER. FOR CORRECT REPRESENTATIONS, MAKE REFERENCE TO THIS BROCHURE AND TO THE DOCUMENTS REQUIRED BY SECTION 718.503, FLORIDA STATUTES, TO BE FURNISHED BY A DEVELOPER TO A BUYER OR LESSEE.

Dale Sorensen, licensed real estate broker. All renderings are artist's conception, all dimensions are approximate and all floorplans/development plans are subject to change by the developer. Features, amenities, prices, terms and availability are subject to change without notice or obligation. Access to and right to use recreational amenities within the development may be subject to payment of use fees, membership requirements or other limitations. Site plans included herein are not plats or legal descriptions; they are rough approximations and do not show all actual details or conditions. As of December 4, 2018.



# SURFSEGE

AT INDIAN RIVER SHORES

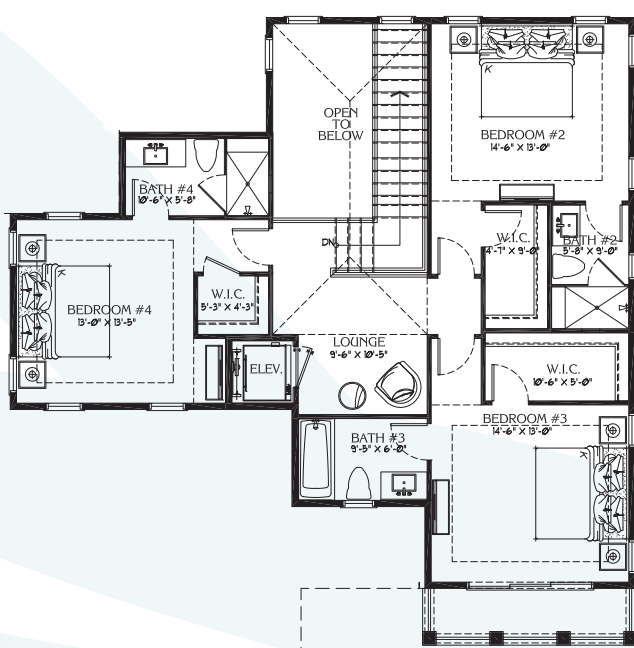
## SEABREEZE FLOOR PLAN

SINGLE-FAMILY HOMES

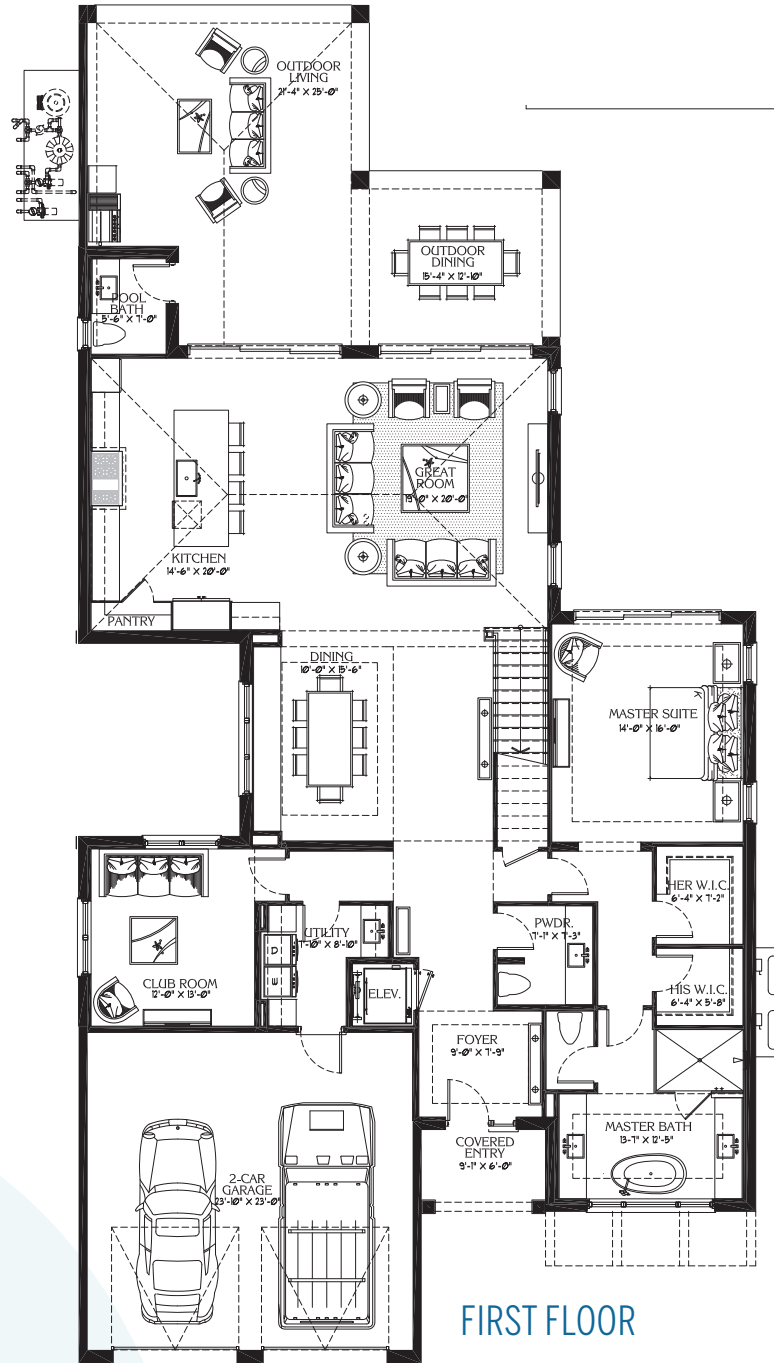
- 4 BEDS
- 4.5 BATHS
- + BONUS ROOM

LIVING AREA: 3,513 SQUARE FEET  
 GARAGE: 607 SQUARE FEET  
 OUTDOOR LIVING - ENTRY: 768 SQUARE FEET

TOTAL AREA: 4,888 SQUARE FEET



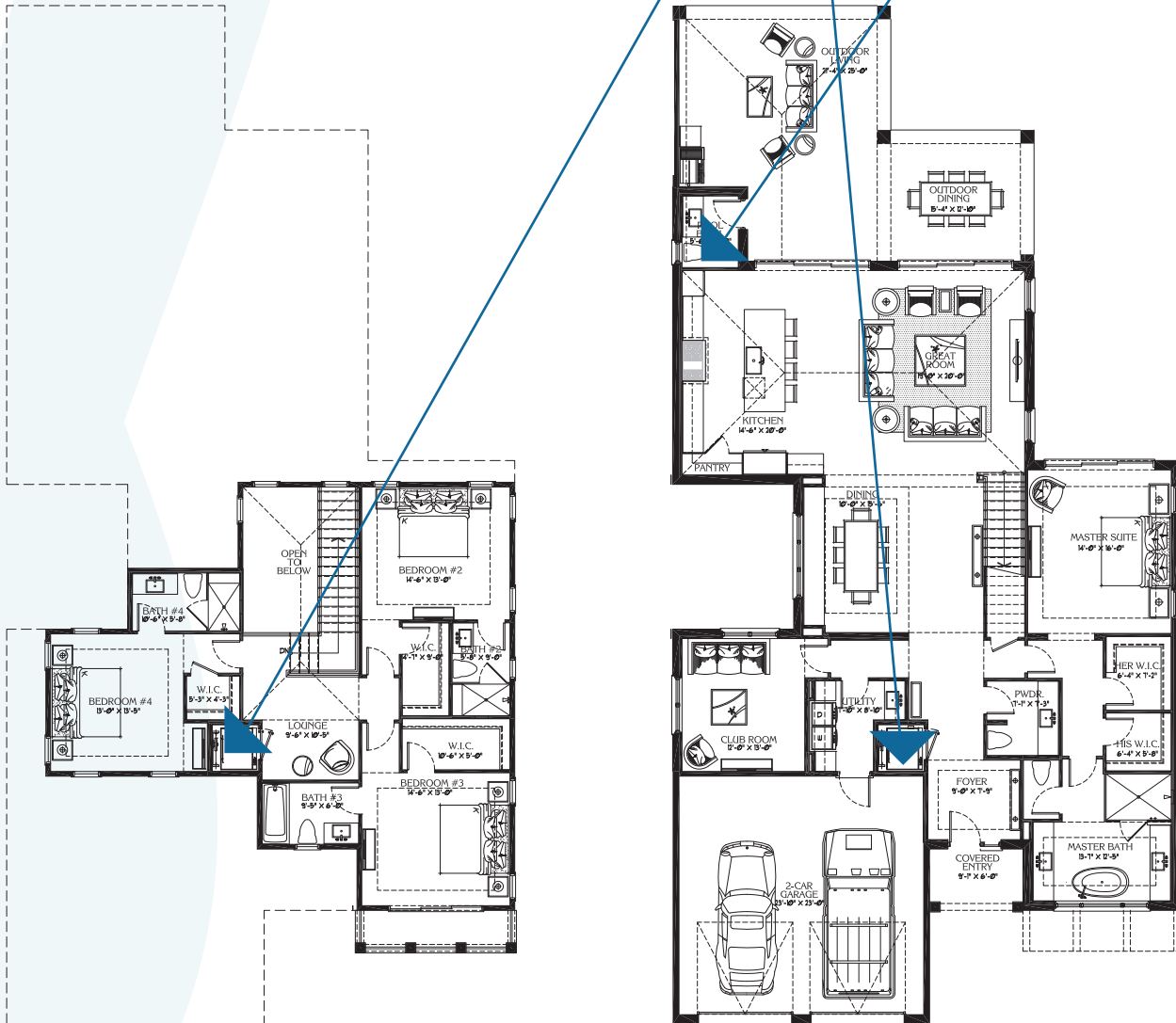
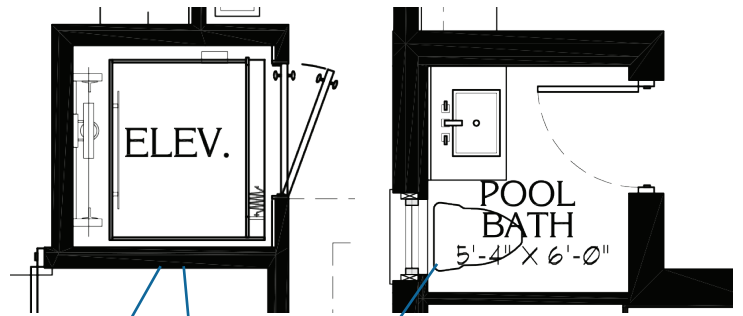
SECOND FLOOR



FIRST FLOOR

# SEABREEZE OPTIONS

ELEVATOR AND POOL BATH: 46 SQUARE FEET



DALE SORENSEN  
REAL ESTATE INC.  
THE RIGHT MOVE™

772.200.4779

SurfsedgeIndianRiverShores.com



THE LUTGERT COMPANIES

ORAL REPRESENTATIONS CANNOT BE RELIED UPON AS CORRECTLY STATING REPRESENTATIONS OF THE DEVELOPER. FOR CORRECT REPRESENTATIONS, MAKE REFERENCE TO THIS BROCHURE AND TO THE DOCUMENTS REQUIRED BY SECTION 718.503, FLORIDA STATUTES, TO BE FURNISHED BY A DEVELOPER TO A BUYER OR LESSEE.

Dale Sorensen, licensed real estate broker. All renderings are artist's conception, all dimensions are approximate and all floorplans/development plans are subject to change by the developer. Features, amenities, prices, terms and availability are subject to change without notice or obligation. Access to and right to use recreational amenities within the development may be subject to payment of use fees, membership requirements or other limitations. Site plans included herein are not plats or legal descriptions; they are rough approximations and do not show all actual details or conditions. As of December 4, 2018.



# SURFSEGE

AT INDIAN RIVER SHORES

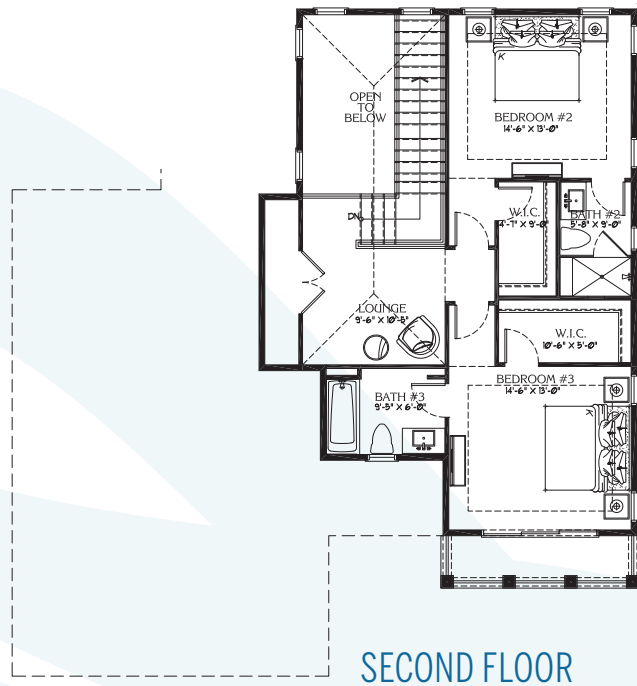
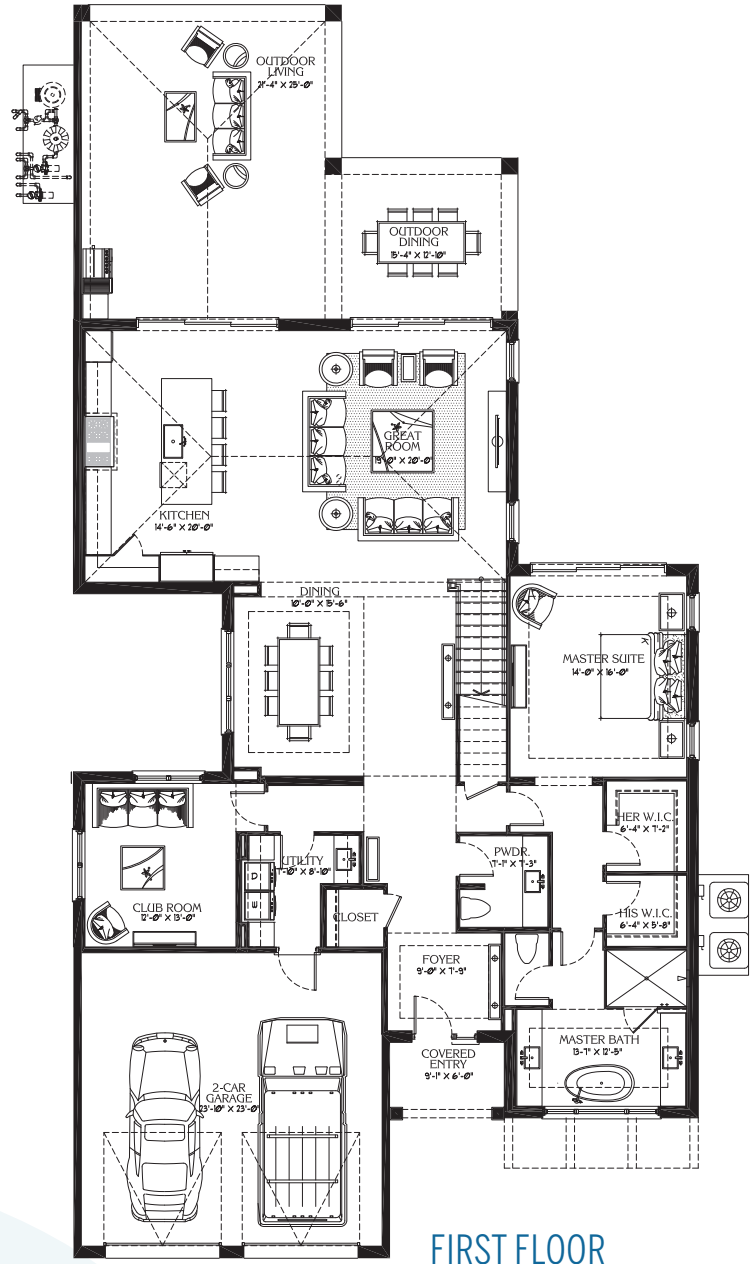
## SEA SHELL FLOOR PLAN

SINGLE-FAMILY HOMES

- 3 BEDS
- 3.5 BATHS
- + BONUS ROOM

LIVING AREA: 3,271 SQUARE FEET  
 GARAGE : 607 SQUARE FEET  
 OUTDOOR LIVING -  
 ENTRY: 715 SQUARE FEET

TOTAL AREA: 4,593 SQUARE FEET

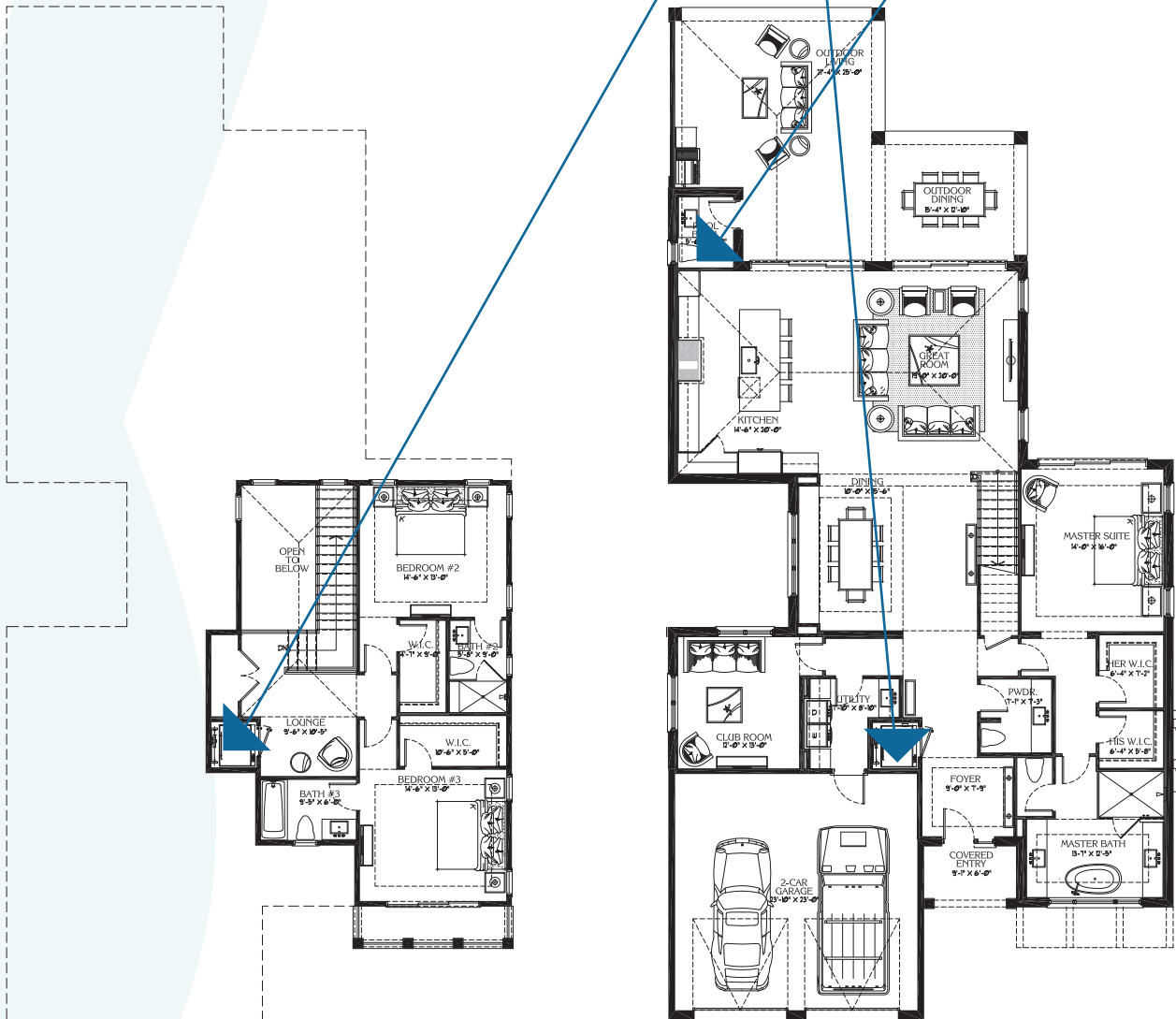
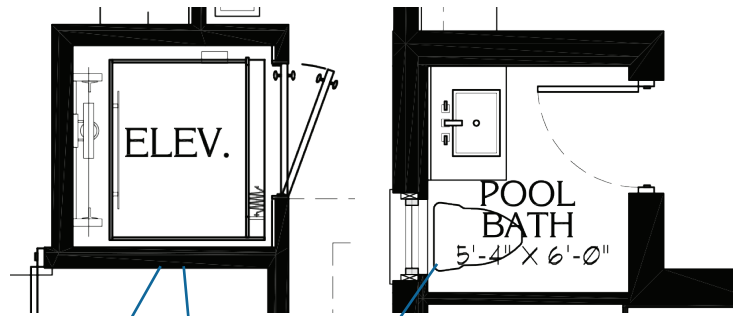


SECOND FLOOR

FIRST FLOOR

# SEA SHELL OPTIONS

ELEVATOR AND POOL BATH: 46 SQUARE FEET



DALE SORENSEN  
REAL ESTATE INC.  
THE RIGHT MOVE<sup>SM</sup>

772.200.4779

SurfsedgeIndianRiverShores.com



THE LUTKERT COMPANIES

ORAL REPRESENTATIONS CANNOT BE RELIED UPON AS CORRECTLY STATING REPRESENTATIONS OF THE DEVELOPER. FOR CORRECT REPRESENTATIONS, MAKE REFERENCE TO THIS BROCHURE AND TO THE DOCUMENTS REQUIRED BY SECTION 718.503, FLORIDA STATUTES, TO BE FURNISHED BY A DEVELOPER TO A BUYER OR LESSEE.

Dale Sorensen, licensed real estate broker. All renderings are artist's conception, all dimensions are approximate and all floorplans/development plans are subject to change by the developer. Features, amenities, prices, terms and availability are subject to change without notice or obligation. Access to and right to use recreational amenities within the development may be subject to payment of use fees, membership requirements or other limitations. Site plans included herein are not plats or legal descriptions; they are rough approximations and do not show all actual details or conditions. As of December 4, 2018.